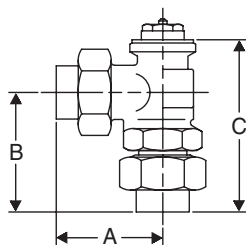
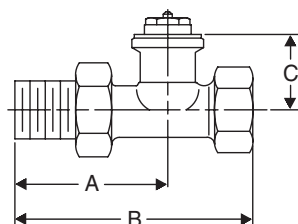
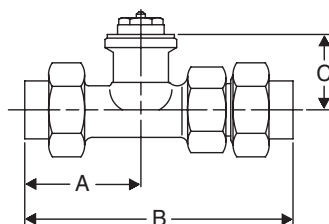
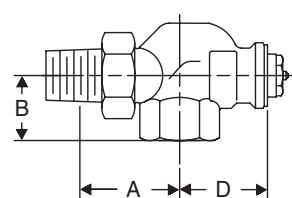
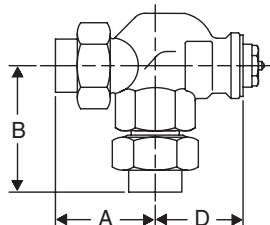

RV-4 Angle

RV-4 Angle Solder

RV-4 Straight

RV-4 Straight Solder

RV-4 Reversed Angle

RV-4 Reversed Angle Solder


For Hot Water and Low Pressure Steam

Armstrong's thermostatic radiator valves are offered in straight, angle and reversed angle patterns. Thermostatic operators provide accurate and automatic control of space temperature. They are ideal for hot water and low pressure steam heated convectors, radiators, thermostatically controlled hydronic or low pressure heat exchangers. Five styles of thermostatic operators are available with liquid, liquid remote or low density wax sensors.

For a fully detailed certified drawing, refer to:

RV-4 Angle **CDY #1049**
RV-4 Straight **CDY #1050**
RV-4 Reversed Angle **CDY #1051**

Physical Data—Valve Bodies

Pattern	Angle								Straight								Reversed Angle							
	in	mm	in	mm	in	mm	in	mm	in	mm	in	mm	in	mm	in	mm	in	mm	in	mm	in	mm	in	mm
Pipe Conn. FPT x MPT	1/2	15	3/4	20	1	25	1-1/4	32	1/2	15	3/4	20	1	25	1-1/4	32	1/2	15	3/4	20	1	25	1-1/4	32
"A"	2-5/16	59	2-5/8	66	2-15/16	59	3-7/16	65	2-15/16	59	2-1/2	64	3-1/8	73	3-9/16	90	2-3/8	60	2-5/8	66	3	76	2-15/16	59
"B"	1	25	1-1/8	28	1-5/16	33	1-9/16	39	3-3/4	95	4-3/16	106	4-15/16	78	6	150	1-1/16	27	1-3/4	44	1-5/16	33	1-9/16	39
"C"	1-15/16	49	2-1/16	52	2-3/8	60	2-3/4	70	1-1/8	28	1-1/8	28	1-1/8	28	1-3/8	35	—	—	—	—	—	—	—	—
"D"	—	—	—	—	—	—	—	—	—	—	—	—	—	—	—	—	1-9/16	40	1-3/8	35	1-1/2	38	1-1/2	38
Weight, lb (kg)	3/4 (0.34)				1-1/2 (0.68)				1-3/4 (0.79)				3/4 (0.34)				1 (0.45)				1-1/4 (0.56)			

Physical Data—Solder Valve Bodies

Pattern	Angle				Straight				Reversed Angle			
	in	mm	in	mm	in	mm	in	mm	in	mm	in	mm
Pipe Connection Solder	1/2	15	3/4	20	1/2	15	3/4	20	1/2	15	3/4	20
"A"	1-7/8	47	2-1/4	57	1-7/8	47	2-5/32	55	1-3/4	44	2-1/4	57
"B"	2-5/32	55	2-1/2	64	4-7/16	113	5-1/4	133	2-3/16	56	3-1/8	79
"C"	3	76	3-1/2	89	1-1/4	32	1-5/32	29	—	—	—	—
"D"	—	—	—	—	—	—	—	—	1-1/2	38	1-1/2	38
Weight, lb (kg)	3/4 (0.34)				1 (0.45)				1-1/4 (0.56)			

Pressure/Temperatures

Model	"A" Insert (Standard On All Valves)	"S" Insert (Provides Longer Life on Steam Service)
Maximum Steam, psi (bar)	15 (1)	
Maximum Temp. °F (°C)	250 (121)	
Max. Diff.—Water, psi (bar)	15 (1)	
Max. Static Pressure, psi (bar)	150 (10)	

NOTE: Normally closed insert available.